



Government of India  
Ministry of Earth Sciences  
India Meteorological Department



Press Release

Date: 26<sup>th</sup> August, 2025

Time of Issue: 1345 hours IST

**Subject: i) Heavy to Very heavy rainfall likely to continue over Northwest India with extremely heavy falls over Jammu region and northwest Punjab on 26<sup>th</sup> August and reduce thereafter with heavy rainfall during subsequent 5 days.**

**ii) Under the influence of Low-pressure area over Bay of Bengal; heavy to very heavy rainfall likely over Odisha, Chhattisgarh, Coastal Andhra Pradesh till 28<sup>th</sup> August with extremely heavy falls over south Odisha and north Coastal Andhra Pradesh on 26<sup>th</sup> August.**

**Realised weather during past 24 hours till 0830 hours IST of today, the 26<sup>th</sup> August, 2025:**

- ❖ **Heavy to very heavy rainfall with Extremely heavy rainfall ( $\geq 21$  cm)** has been recorded at isolated places over Punjab and Haryana.
- ❖ **Very heavy rainfall (12-20 cm)** has been recorded at isolated places over Himachal Pradesh, Chhattisgarh, Madhya Maharashtra.
- ❖ **Heavy rainfall (7-11 cm)** has been recorded at isolated places over Jammu, Uttarakhand, East Uttar Pradesh, East Rajasthan, Odisha, Bihar, Konkan, Gujarat Region, Coastal Andhra Pradesh and Tripura.

**For more details of realised weather, kindly refer [Annexure I](#).**

**i. Weather Systems, Forecast and Warnings (refer to Annexure II & III):**

- ❖ The Monsoon trough is active and runs near its normal position.
- ❖ Under the influence of **upper air cyclonic circulation** lay over northwest Bay of Bengal off Odisha-West Bengal coasts, a **Low-Pressure** area has formed over northwest Bay of Bengal off Odisha coast at 0530 hrs IST of today. It persisted over the same region at 0830 hrs IST of today, 26<sup>th</sup> August 2025; It is likely to move west-northwestwards and become more marked during next 2 days.
- ❖ A **Western Disturbance** as a trough at lower & middle tropospheric levels runs roughly along Long. 70°E to north of Lat. 28°N.
- ❖ An **upper air cyclonic circulation** lay over south Haryana and adjoining northeast Rajasthan in lower & middle tropospheric levels tilted southwards with height.

Under the influence of these systems, the following weather is likely:

**Northwest India:**

- ❖ **Extremely heavy rainfall** very likely over Jammu and northwest Punjab on 26<sup>th</sup> August.
- ❖ Isolated **heavy rainfall** likely to continue over Uttarakhand, Himachal Pradesh, East Rajasthan, Jammu & Kashmir, Haryana, Punjab during next 7 days; Uttar Pradesh, West Rajasthan during 29<sup>th</sup> August-01<sup>st</sup> September with **isolated very heavy rainfall over northwest Punjab, Haryana, Himachal Pradesh on 26<sup>th</sup>; Himachal Pradesh, East Rajasthan during 29<sup>th</sup> August-01<sup>st</sup> September and Uttarakhand on 28<sup>th</sup> & 29<sup>th</sup> August.**
- ❖ Light/moderate rainfall at most/many places over Northwest India and accompanied with thunderstorm & lightning likely over the Jammu-Kashmir-Ladakh-Gilgit-Baltistan-Muzaffarabad, Uttarakhand during next 7 days.

**East & Central India:**

- ❖ **Extremely heavy rainfall** very likely over south Odisha on 26<sup>th</sup> August.
- ❖ Isolated **heavy rainfall** likely over Chhattisgarh, Odisha, Vidarbha during next 5 days; Sub-Himalayan West Bengal & Sikkim during 27<sup>th</sup>-30<sup>th</sup>; Bihar during 30<sup>th</sup> August-01<sup>st</sup> September; Madhya Pradesh during 28<sup>th</sup> August-

01<sup>st</sup> September; Jharkhand on 29<sup>th</sup> & 30<sup>th</sup> August with isolated **very heavy rainfall over Chhattisgarh during 26<sup>th</sup>-28<sup>th</sup>, Odisha on 27<sup>th</sup>, southeast Madhya Pradesh on 29<sup>th</sup> August.**

- ❖ Light to moderate rainfall at most/many places accompanied with thunderstorm & lightning likely over the region during next 7 days.

#### **West India:**

- ❖ **Isolated heavy rainfall** is very likely over Gujarat region, Konkan & Goa, Madhya Maharashtra during next 6-7 days and Marathwada on 28<sup>th</sup> August with **very heavy rainfall** over ghat areas of Madhya Maharashtra on 27<sup>th</sup> & 28<sup>th</sup> August.
- ❖ Light to moderate rainfall at most/many places very likely over the region during next 7 days.

#### **Northeast India:**

- ❖ Isolated **heavy rainfall** likely to continue over Assam & Meghalaya, Arunachal Pradesh during 27<sup>th</sup>-31<sup>st</sup> August; Nagaland, Manipur, Mizoram & Tripura during next 7 days.
- ❖ Light/moderate rainfall at many places accompanied with thunderstorm & lightning likely during next 5 days.

#### **South Peninsular India:**

- ❖ **Extremely heavy rainfall** very likely over north Coastal Andhra Pradesh on 26<sup>th</sup> August
- ❖ Isolated **heavy rainfall** likely over Coastal Andhra Pradesh & Yanam, Telangana during 26<sup>th</sup>-28<sup>th</sup>; Kerala & Mahe during 26<sup>th</sup>-29<sup>th</sup>; Coastal Karnataka during 26<sup>th</sup>-30<sup>th</sup>; Interior Karnataka on 27<sup>th</sup> & 28<sup>th</sup>; Tamil Nadu during 27<sup>th</sup>-29<sup>th</sup> August with **very heavy rainfall over Telangana on 26<sup>th</sup> August.**
- ❖ Light to moderate rainfall at some places accompanied with thunderstorm & lightning likely over the region during next 3 days.

#### **Fishermen warning:**

Fishermen are advised not to venture into the following from 26<sup>th</sup> August to 31<sup>st</sup> August 2025 to the following Areas:

##### **Arabian Sea:**

Along and off the Somalia, Oman coasts and adjoining sea areas during 26<sup>th</sup> to 31<sup>st</sup> August; over most parts of central Arabian Sea and adjoining areas of southwest, north Arabian Sea during 25<sup>th</sup> to 27<sup>th</sup> August; over Lakshadweep, Comorin areas during 26<sup>th</sup> to 28<sup>th</sup> August; along and off south Gujarat coast during 26<sup>th</sup> to 29<sup>th</sup> August; Konkan, Goa, Karnataka-off Kerala coast during 26<sup>th</sup> to 30<sup>th</sup> August.

##### **Bay of Bengal:**

Along and off Odisha, West Bengal, Bangladesh coasts during 26<sup>th</sup> to 29<sup>th</sup> August, off Odisha coast on 29<sup>th</sup> & 30<sup>th</sup> August; along and off Andhra Pradesh coast during 26<sup>th</sup> to 31<sup>st</sup> August; over many parts of north and adjoining central Bay of Bengal on 26<sup>th</sup> August; over north, central Bay of Bengal during 26<sup>th</sup> to 30<sup>th</sup> August; most parts of southwest Bay of Bengal during 28<sup>th</sup> to 31<sup>st</sup> August; some parts of southeast Bay of Bengal on 29<sup>th</sup> and over Gulf of Mannar during 26<sup>th</sup> to 29<sup>th</sup> August.

## **ii. Weather conditions and forecast over Delhi/NCR during 26<sup>th</sup> to 29<sup>th</sup> August, 2025 (Annexure IV)**

**For more details, kindly refer National Weather Bulletin:**

[https://mausam.imd.gov.in/responsive/all\\_india\\_forecast\\_bulletin.php](https://mausam.imd.gov.in/responsive/all_india_forecast_bulletin.php)

**For District wise warnings refer:** <https://mausam.imd.gov.in/responsive/districtWiseWarningGIS.php>

**For Fishermen warning refer** <https://rsmcnewdelhi.imd.gov.in/fishermen-warning.php>

**Rainfall recorded (in cm) during past 24 hours till 0830 hours IST of today, the 26<sup>th</sup> August:**

**Haryana: Bhuna (Fatehabad)-25,** Jakhal Mandi Hmo (dist Fatehabad) 7;

**Punjab:** Gurudaspur (dist Gurdaspur) 22; Taran Taran (dist Tarn Taran), Gurdaspur AMFU (dist Gurdaspur) 19 Each; Tibri (dist Gurdaspur) 18; Amritsar (dist Amritsar) 15; Handiaya Hmo (dist Barnala) 14; Madhopur (dist Pathankot), Malikpur (dist Pathankot), Dhariwal Irr (dist Gurdaspur) 13 Each; Phangota (dist Pathankot), Aliwal (dist Gurdaspur) 12 Each; Amritsar Irr (dist Amritsar) 11; Shahpur Kandi (dist Pathankot), Patti (dist Tarn Taran), Payal REV (dist Ludhiana) 10 Each; Ranjit Sagar Dam Site (dist Pathankot), Ranewali Irr (dist Amritsar), Jandiala Irr (dist Amritsar), Athwal Irr (dist Gurdaspur), Rasulpur Irr (dist Tarn Taran), Manihala Irr (dist Tarn Taran), Valtoha Irr (dist Tarn Taran) 9 Each; Samrala (dist Ludhiana), Faridkot (dist Faridkot), Dasuya (dist Hoshiarpur), Bhuchar Irr (dist Tarn Taran), Ferozpur Kvk AWS (dist Ferozepur) 8 Each; Moga (dist Moga), Nawanshahr (dist Sbs Nagar), Khawaspur Irr (dist Tarn Taran), Barnala (dist Barnala) 7 Each;

**Chhattisgarh:** Barsur (dist Dantewada) 19; Bastanar (dist Bastar) 16; Gidam (dist Dantewada) 14; Darbha (dist Bastar) 12; Pali (dist Korba), Lohandiguda (dist Bastar), Bade Bacheli (dist Dantewada) 10 Each; Nangur (dist Bastar) 9; Pendra Road (dist Gaurela Pendra Marwahi) 7;

**Himachal Pradesh:** Naina Davi (dist Bilaspur) 16; Chuari (dist Chamba) 12; Dharmasala (dist Kangra), Manali (dist Kullu) 10 Each; Palampur (dist Kangra), Ghamroor (dist Kangra), Kangra AP (dist Kangra), Nagrota Surian (dist Kangra) 9 Each; Bhuntar AP (dist Kullu), Bharwain (dist Una), Kothi (dist Kullu) 8 Each; Guler (dist Kangra), Chamba AWS (dist Chamba), Sangraha (dist Sirmaur) 7 Each;

**Jammu-KashmirLadakh-Gilgit-Baltistan-Muzaffarabad:** Kathua (dist Kathua) 15; Burmal ARG (dist Kathua) 14; Bhaderwah ARG (dist Doda) 11; Samba AWS (dist Samba), Badarwah (dist Doda) 10 Each; Udhampur(IAF) (dist Udhampur) 9; Jammu AWS (dist Jammu), Jammu (dist Jammu), Jammu AP (dist Jammu) 8 Each; Reasi ARG (dist Reasi), Katra (dist Reasi) 7 Each;

**Coastal Andhra Pradesh & Yanam:** Kalingapatnam (dist Srikakulam) 10; Pusapatirega (dist Vizianagaram) 7;

**Odisha:** Lamataput (dist Koraput), Mathili (dist Malkangiri) 10 Each; Paralakhemundi (dist Gajapati) 7;

**Nagaland, Manipur, Mizoram & Tripura:** Dharmanagar/panisagar (dist North Tripura) 9; Lengpui (dist Aizawl), Kadamtala ARG (dist North Tripura) 8 Each; Kailashahar AP (dist Unakoti), Dimapur AWS (dist Dimapur), Kailashahar AWS (dist Unakoti) 7 Each;

**Gujarat Region:** Khanvel (dist Dadara & Nagar Haveli) 9; Khergam (dist Navsari) 8; Umerpada (dist Surat), Vijaynagar (dist Sabarkantha) 7 Each;

**Konkan & Goa:** Matheran (dist Raigad) 9; Vikramgad (dist Palghar), Jawhar (dist Palghar) 8 Each; Sudhagad Pali (dist Raigad), Mahad (dist Raigad), Mhasla (dist Raigad) 7 Each;

**Madhya Maharashtra:** Mahabaleshwar (dist Satara) 9; Lonavala ARG (dist Pune) 7;

**East Rajasthan:** Deogarh (dist Rajsamand) 8;

**West Uttar Pradesh:** Etawah (CWC) (dist Etawah) 8;

**Bihar:** Wazirganj (dist Gaya) 8; Indrapuri (dist Rohtas) 7;

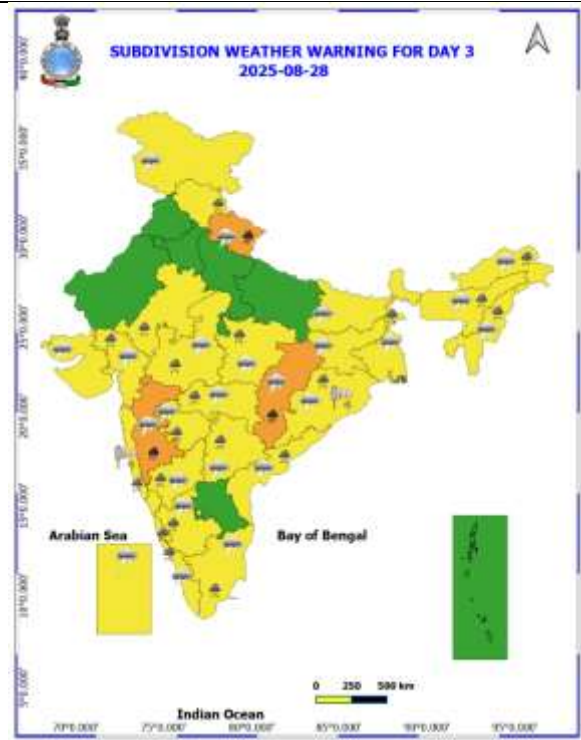
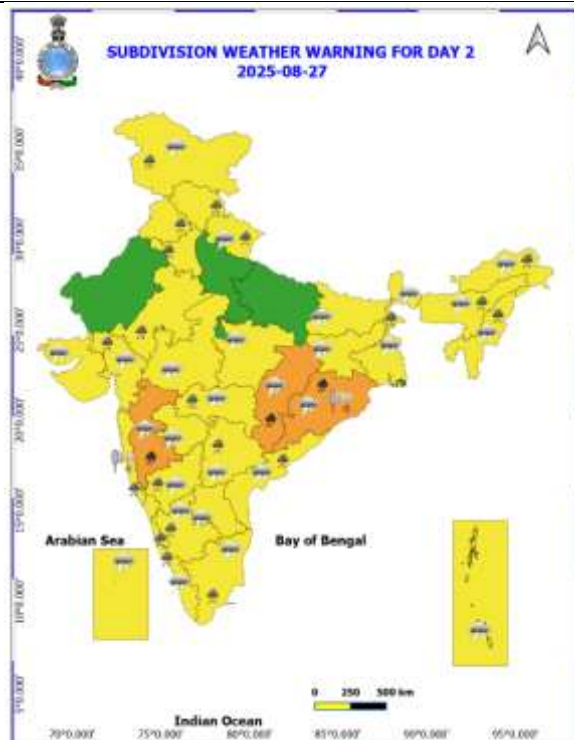
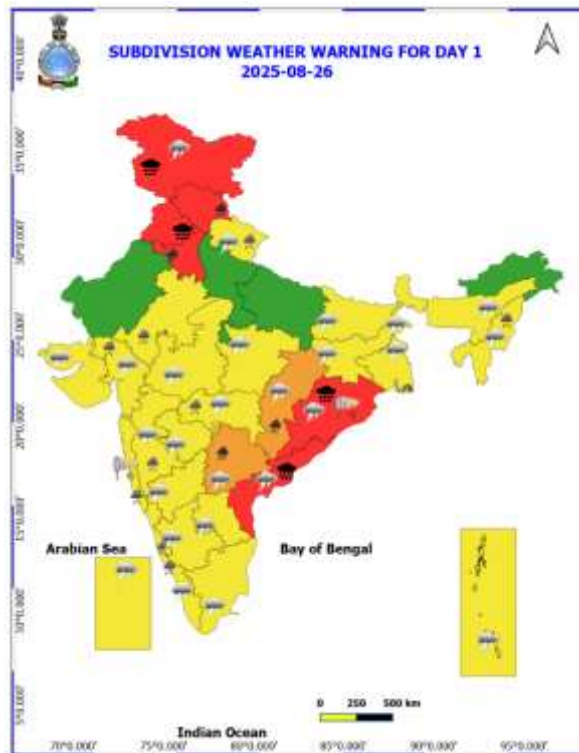
**Uttarakhand:** Nainital (dist Nainital) 7;

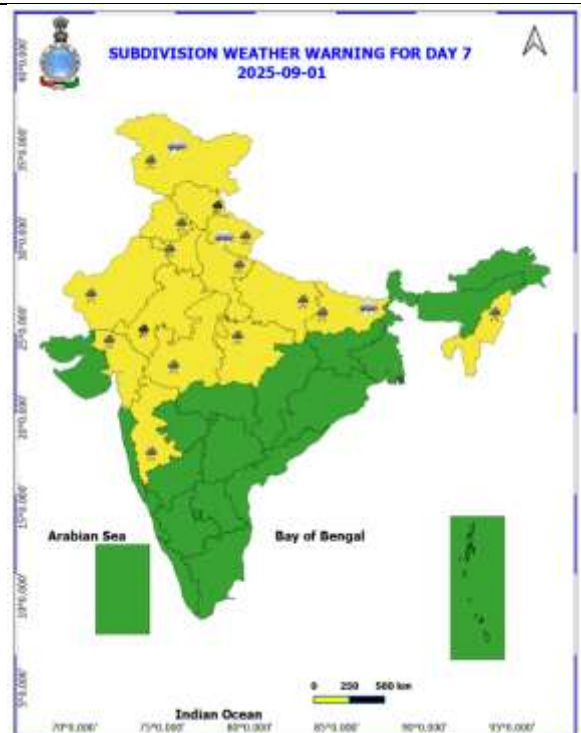
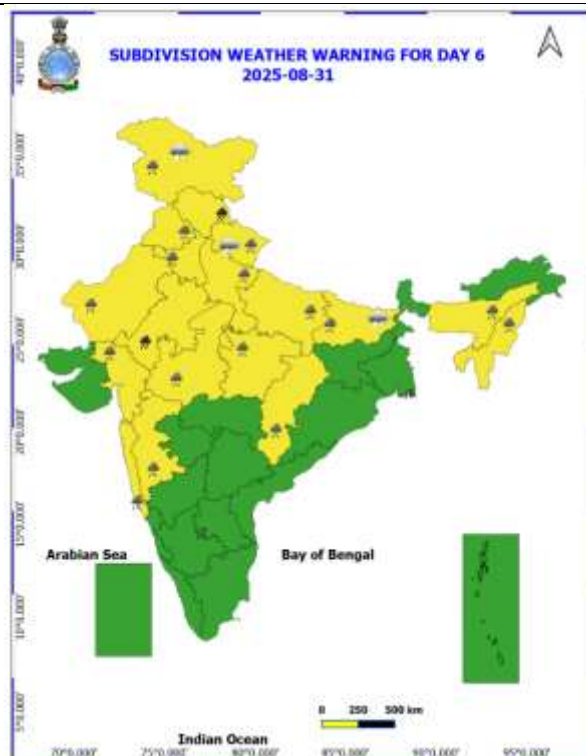
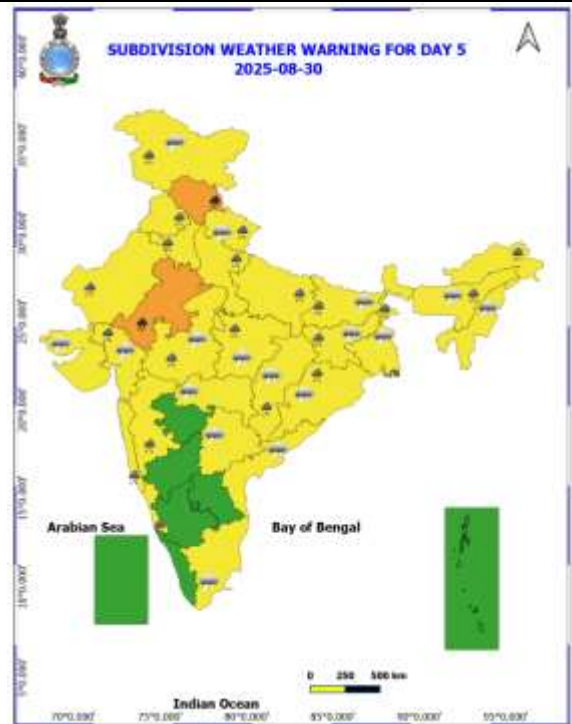
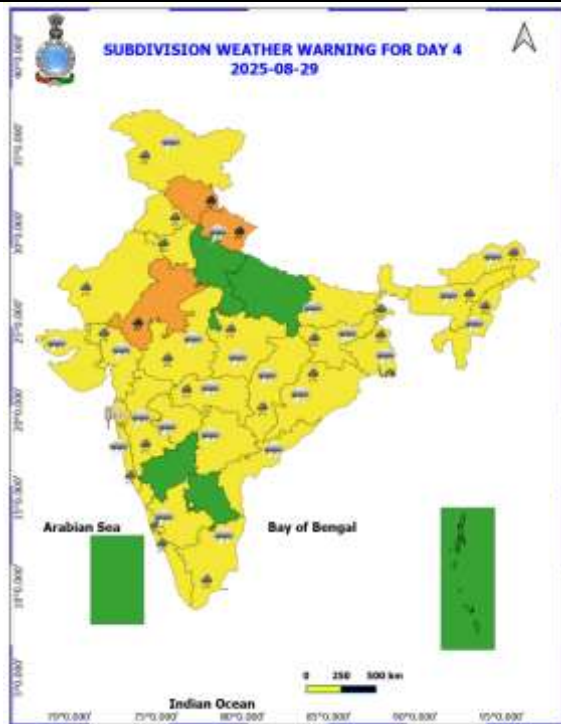
**East Uttar Pradesh:** Lucknow ( Ap) (dist Lucknow) 7.,

Table-1								
7 Days Rainfall Forecast								
S.No.	Subdivision	26- Aug	27- Aug	28- Aug	29- Aug	30- Aug	31- Aug	1- Sep
		Day 1	Day 2	Day 3	Day 4	Day 5	Day 6	Day 7
1	ANDAMAN & NICOBAR ISLANDS	FWS	FWS	FWS	FWS	WS	WS	WS
2	ARUNACHAL PRADESH	SCT	SCT	FWS	WS	FWS	SCT	SCT
3	ASSAM & MEHGHALAYA	FWS	FWS	WS	WS	FWS	SCT	SCT
4	NAGALAND, MANIPUR, MIZORAM AND TRIPURA	FWS	FWS	WS	FWS	FWS	FWS	FWS
5	SUB HIMALAYAN WEST BENGAL & SIKKIM	FWS	WS	WS	WS	WS	FWS	FWS
6	GANGETIC WEST BENGAL	SCT	SCT	FWS	WS	WS	FWS	FWS
7	ODISHA	WS	WS	WS	FWS	FWS	FWS	FWS
8	JHARKHAND	SCT	SCT	FWS	WS	WS	WS	WS
9	BIHAR	ISOL	ISOL	SCT	SCT	FWS	FWS	FWS
10	EAST UTTAR PRADESH	SCT	ISOL	SCT	SCT	FWS	FWS	FWS
11	WEST UTTAR PRADESH	FWS	SCT	SCT	FWS	FWS	WS	WS
12	UTTARAKHAND	WS	FWS	WS	WS	WS	WS	WS
13	HARYANA, CHANDIGARH & DELHI	WS	SCT	FWS	FWS	FWS	FWS	FWS
14	PUNJAB	WS	SCT	SCT	FWS	FWS	FWS	FWS
15	HIMACHAL PRADESH	WS	FWS	FWS	WS	WS	WS	WS
16	JAMMU AND KASHMIR AND LADAKH	WS	SCT	SCT	SCT	FWS	FWS	FWS
17	WEST RAJASTHAN	SCT	SCT	SCT	ISOL	SCT	FWS	FWS
18	EAST RAJASTHAN	FWS	FWS	SCT	FWS	FWS	WS	WS
19	WEST MADHYA PRADESH	SCT	FWS	FWS	FWS	WS	WS	FWS
20	EAST MADHYA PRADESH	SCT	FWS	FWS	WS	WS	WS	FWS
21	GUJRAT REGION	WS	WS	WS	WS	WS	WS	WS
22	SAURASHTRA & KUTCH	FWS	FWS	FWS	FWS	FWS	FWS	FWS
23	KONKAN & GOA	WS	WS	WS	WS	WS	WS	WS
24	MADHYA MAHARASHTRA	SCT	SCT	FWS	FWS	SCT	SCT	SCT
25	MARATHWADA	ISOL	SCT	SCT	FWS	SCT	ISOL	ISOL
26	VIDARBHA	FWS	FWS	WS	WS	WS	FWS	FWS
27	CHHATTISGARH	WS	WS	WS	WS	WS	FWS	FWS
28	COASTAL ANDHRA PRADESH	WS	FWS	SCT	SCT	SCT	ISOL	ISOL
29	TELANGANA	WS	FWS	FWS	SCT	SCT	SCT	SCT
30	RAYALASEEMA	SCT	SCT	SCT	ISOL	ISOL	ISOL	ISOL
31	TAMILNADU & PUDUCHERRY	ISOL	ISOL	ISOL	ISOL	ISOL	ISOL	ISOL
32	COSTAL KARNATAKA	WS	WS	WS	WS	WS	WS	WS
33	NORTH INTERIOR KARNATAKA	SCT	FWS	WS	FWS	SCT	SCT	SCT
34	SOUTH INTERIOR KARNATAKA	SCT	FWS	WS	FWS	SCT	ISOL	ISOL
35	KERALA AND MAHE	FWS	WS	WS	WS	WS	FWS	FWS
36	LAKSHADWEEP	FWS	WS	WS	WS	WS	FWS	FWS

- As the lead period increases forecast accuracy decrease.







- Action may be taken based on ORANGE AND REDCOLOUR warnings.
- Vulnerable regions likely urban and hilly areas action may be initiated for heavy rainfall warning.
- As the lead period increases forecast accuracy decreases.

Detailed districtwise Multi Hazard weather warning for next five days available at  
<https://mausam.imd.gov.in/responsive/districtWiseWarningGIS.php>

**Weather forecast over Delhi/NCR during 26<sup>th</sup> to 29<sup>th</sup> August 2025****Past Weather:**

There has been no large change in the minimum temperature and fall in maximum temperature up to 3 - 4°C over Delhi/NCR during the past 24 hours. The maximum and minimum temperatures over Delhi were around 28 to 29°C and 23 to 25°C respectively. The minimum temperature was below normal up to 1 – 2°C and maximum temperature was below normal up to 4 – 7°C. Generally cloudy sky conditions with predominant surface wind from the northeast/east direction with wind speeds up to 20 kmph prevailed during the past 24 hours. Light rain/thundershowers at most places with moderate rain at isolated places has been recorded in Delhi. Generally cloudy sky conditions with a wind speed of less than 20 kmph from the southeast direction prevailed over the region in the forenoon today.

**Weather Forecast:**

**26.08.2025:** Generally cloudy sky. One or two spells of very light to light rain/thundershowers at many places with moderate rain at isolated places during afternoon/evening. The maximum temperatures over Delhi are likely to be in the range of 29 to 31°C. The maximum temperature will be below normal up to 3 to 5 °C. The predominant surface wind will likely be from the southeast direction with a wind speed of up to 15-20 kmph during the afternoon hours. The wind speed will decrease becoming less than 15 kmph from the southeast direction during the evening and night.

**27.08.2025:** Generally cloudy sky. One or two spells of very light to light rain/thundershowers. The maximum and minimum temperatures over Delhi are likely to be in the range of 32 to 34°C and 22 to 24°C respectively. The minimum temperature will be below normal up to 2 to 4°C and the maximum temperature will be below normal up to 1 to 2°C. The predominant surface wind will likely to be from the southeast direction with a wind speed of up to 12 - 16 kmph during morning hours. The wind speed will gradually increase becoming less than 20 kmph from the southeast direction in the afternoon. The wind speed will decrease becoming less than 15 kmph from the southeast direction during the evening and night.

**28.08.2025:** Generally cloudy sky. Possibility of very light to light rain/ thundershowers. The maximum and minimum temperatures over Delhi are likely to be in the range of 31 to 33°C and 23 to 25°C respectively. The minimum temperature will be below normal up to 1 to 2°C and the maximum temperature will be below normal up to 1 to 2°C. The predominant surface wind will likely to be from the southeast direction with a wind speed of up to 15-20 kmph during morning hours. The wind speed will gradually decrease becoming less than 16 kmph from the southeast direction in the afternoon. The wind speed will increase becoming less than 20 kmph from the southeast direction during the evening and night.

**29.08.2025:** Generally cloudy sky. possibility of very light to light rain/thundershowers. The maximum and minimum temperatures over Delhi are likely to be in the range of 30 to 32°C and 23 to 25°C respectively. The minimum temperature will be below normal up to 1 to 2°C and the maximum temperature will be below normal up to 1 to 2°C. The predominant surface wind will likely be from the southeast direction with a wind speed of less than 18 kmph during the morning hours. The wind speed will gradually increase becoming less than 20 kmph from the southeast direction in the afternoon. The wind speed will decrease becoming less than 16 kmph from the southeast direction during the evening and night.

**Impact expected and Action Suggested due to light to moderate rainfall with thundershowers:**

- Damage to standing crops, Minor to major damage to power and communication lines due to breaking of branches, Partial damage to vulnerable structures due to strong winds, Loose objects may fly.
- People are advised to keep a watch on the weather for worsening conditions and be ready to move to safer places accordingly, stay indoors, close windows & doors and avoid travel if possible, take safe shelters; do not take shelter under trees, do not lie on concrete floors and do not lean against concrete walls, unplug electrical/ electronic appliances, immediately get out of water bodies, keep away from all the objects that conduct electricity.

### Impact & Action Suggested due to

- ❖ **Isolated Extremely heavy rainfall** very likely over Jammu, northwest Punjab, south Odisha and north Coastal Andhra Pradesh on 26<sup>th</sup> August.
- ❖ **isolated very heavy rainfall** over Punjab, Haryana, Himachal Pradesh, Coastal Andhra Pradesh, Telangana on 26<sup>th</sup>; Himachal Pradesh, East Rajasthan during 29<sup>th</sup> August-01<sup>st</sup> September and Uttarakhand on 28<sup>th</sup> & 29<sup>th</sup>; Chhattisgarh during 26<sup>th</sup>-28<sup>th</sup>; Odisha on 27<sup>th</sup>; southeast Madhya Pradesh on 29<sup>th</sup> and ghat areas of Madhya Maharashtra on 27<sup>th</sup> & 28<sup>th</sup> August.

### Impact Expected

- Localized Flooding of roads, water logging in low lying areas and closure of underpasses mainly in urban areas of the above region.
- Occasional reduction in visibility due to heavy rainfall.
- Disruption of traffic in major cities due to water logging in roads leading to increased travel time.
- Minor damage to kutcha roads.
- Possibilities of damage to vulnerable structure.
- Localized Landslides/Mudslides/landslips/mudslips/landsinks/mudsinks.
- Damage to horticulture and standing crops in some areas due to inundation.
- It may lead to riverine flooding in some river catchments (for riverine flooding please visit Web page of CWC)

### Action Suggested

- Check for traffic congestion on your route before leaving for your destination.
- Follow any traffic advisories that are issued in this regard.
- Avoid going to areas that face the water logging problems often.
- Avoid staying in vulnerable structure.

### Agromet advisories for likely impact of Heavy / Heavy to Very Heavy / Extremely Heavy Rainfall

- In **Jammu and Kashmir**, do not allow water to stagnate in fields of maize, pulses, cowpea, bajra and vegetables in **Sub Tropical Zone**. Ensure proper drainage in the fields of rice, maize, pulses, horticultural and vegetable crops in **Intermediate Zone** and maize, kidney bean and vegetables in **Valley Temperate Zone**.
- In **Himachal Pradesh**, maintain proper drainage channels in ginger, turmeric and maize fields in **Mid Hills Sub Humid Zone** and rice, maize and vegetable fields in **Sub Montane and Low Hills Sub Tropical Zone**. In **High Hills Sub Temperate Wet Zone**, harvest ripened tomatoes and ensure proper drainage in maize, kidney bean, vegetable fields and fruit orchards.
- In **Uttarakhand**, maintain proper drainage channels in fields of soybean, maize, pulses, finger millet, ginger, vegetable and fruit orchards in **Hill Zone**; barnyard millet, finger millet and green gram in **Sub Humid Sub Tropic Zone** and rice, green gram, black gram, sugarcane, maize, soybean, groundnut and vegetables in **Bhabar and Tarai Zone**.
- In **Punjab**, maintain proper drainage in chilli fields and remove stagnant rainwater immediately after rainfall in **Undulating Plain Zone**. Ensure proper drainage in fields of cotton and maize in **Western Zone**; sugarcane, maize and cotton in **Central Plain Zone**; cotton in **Western Plain Zone** and sugarcane, maize, soybean and green gram in **Sub-Montane Undulating Zone**.
- In **Haryana**, to prevent waterlogging make arrangements to drain out excess water from fields of cotton, pearl millet, green gram and cluster bean in **Western Zone** and sugarcane, cotton, maize, pearl millet and vegetables in **Eastern Zone**.
- In **East Rajasthan**, make arrangements to drain out excess water from fields of maize, soybean, groundnut and vegetable nurseries in **Sub Humid Southern Plain and Aravali Hill Zone** and soybean, maize and cotton in **Southern Humid Plain Zone**.
- In **Odisha**, make provision for draining out excess rain water from fields of **pulses, maize, groundnut and vegetables in Eastern Ghat High Land Zone and South Eastern Ghat Zone**; green gram, black gram, sugarcane, vegetables and fruit orchards in **East and South Eastern Coastal Plain Zone**; pulses, maize, pigeon pea, groundnut and vegetables in **North Eastern Ghat Zone** and rice, maize, black gram and vegetables in **North Central Plateau Zone**.



- In **Coastal Andhra Pradesh**, make arrangements for draining excess water from fields of maize, green gram, groundnut, mesta and cotton in **North Coastal Zone** and maize, groundnut, finger millet, ginger, turmeric and vegetables in **High Altitude Tribal Zone**.
- In **Chhattisgarh**, ensure proper drainage in fields of rice, minor millets, maize, pulses and oilseeds in **Bastar Plateau Zone**; rice and vegetables in **North Hill Zone** and maize, groundnut, soybean, pigeon pea and vegetables in **Chattisgarh Plain Zone**.
- In **ghat areas** of **Madhya Maharashtra**, make arrangements to drain out excess water from rice, maize, groundnut, soybean, vegetable fields and fruit orchards.

#### **Livestock / Fishery**

- Keep the animals inside the shed during heavy rainfall and provide them balanced feed.
- Store feed and fodder in a safe place to prevent spoilage.
- Construct an outlet with proper netting around the ponds to drain out excess water, thereby preventing fish from escaping in case of overflow.

#### **Agromet advisories for likely impact of Thunderstorm / Gusty Winds / Squally Winds**

**(Based on the IBF and advisories issued by different AMFUs)**

- Provide mechanical support to horticultural crops and staking or support to vegetables and young fruit plants / fruit-bearing plants to avoid lodging due to strong winds.

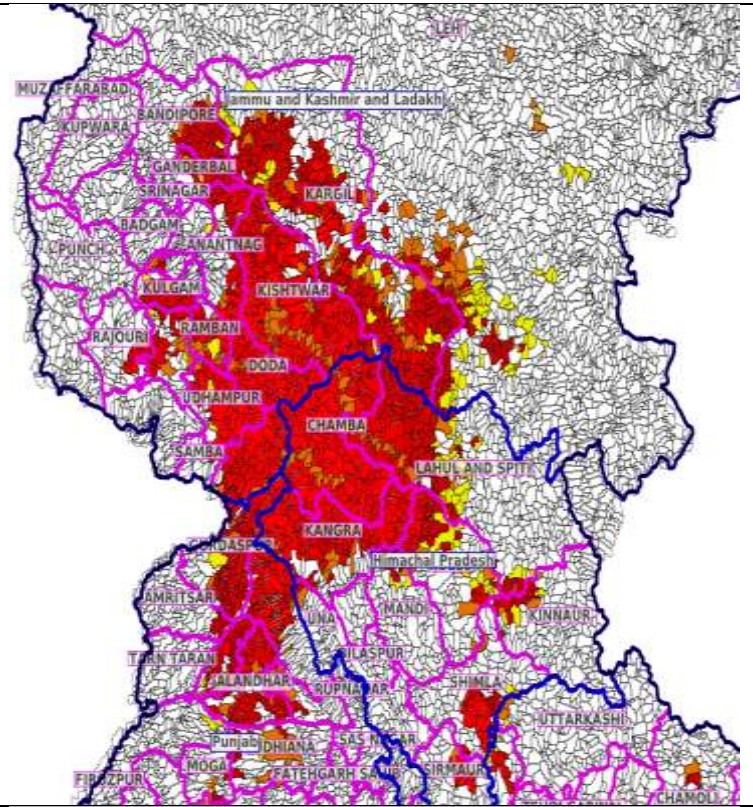
Flash flood guidance:

24 hours Outlook for the Flash Flood Risk (FFR) till 1130 IST of 27-08-2025 :

Moderate to High flash flood risk likely over few watersheds & neighbourhoods of following Met Sub-divisions during next 24 hours.

Himachal Pradesh - Chamba, Kangra, Kinnaur, Kullu, Lahul&Spiti, Mandi, Shimla, Sirmaur and Una districts. Jammu & Kashmir & Ladakh - Bandipore, Doda, Ganderwal, Jammu, Kathua, Kistwar, Kulgam, Rajouri, Ramban, Riasi, Samba, Shopian, Udhampur, Kargil and Leh And Ladakh districts. Punjab - Amritsar, Gurdaspur, Hoshiarpur, Jalandhar, Kapurthala, Ludhiana and Tarn Taran districts.

Surface runoff/ Inundation may occur at some fully saturated soils & low-lying areas over Area of Concern (AoC) as shown in map due to expected rainfall occurrence in next 24 hours.

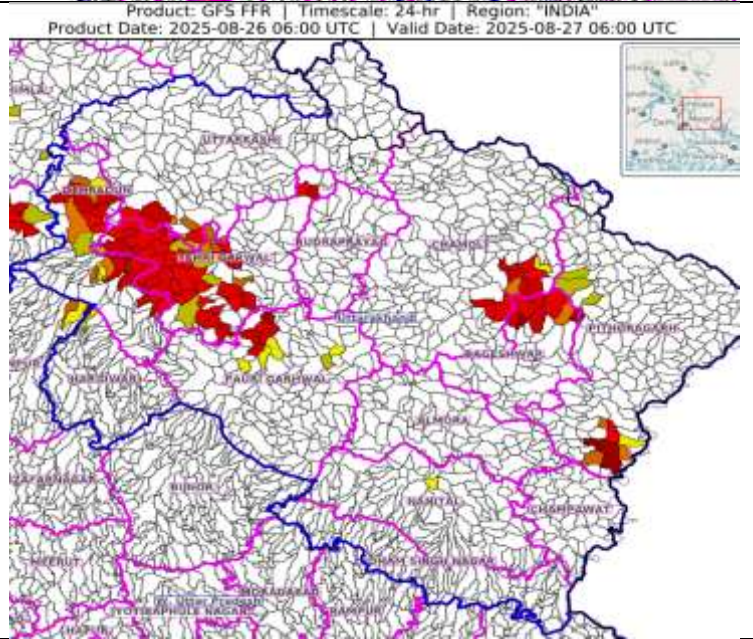


24 hours Outlook for the Flash Flood Risk (FFR) till 1130 IST of 27-08-2025 :

Low to Moderate flash flood risk likely over few watersheds & neighbourhoods of following Met Sub-divisions during next 24 hours.

Uttarakhand - Bageshwar, Chamoli, Dehradun, Nanital, Pauri Garhwal, Pithoragarh, Rudraprayag, Tehri Garwal and Uttarkashi districts.

Surface runoff/ Inundation may occur at some fully saturated soils & low-lying areas over Area of Concern (AoC) as shown in map due to expected rainfall occurrence in next 24 hours.



### Legends & abbreviations:

- ❖ **Heavy Rain:**64.5-115.5mm; **Very Heavy Rain:**115.6-204.4mm; **Extremely Heavy Rain:** >204.4mm.
- ❖ **Obsy:** Observatory; Automatic Weather Station; **ARG:** Automatic Rain Gauge; **dist:** District; **NH:** National Highway; **KVK:** Krishi Vigyan Kendra; **DVC:** Damodar Valley Corporation; **PTO:** Part Time Office, **Aero:** Aerodrome, **IAF:** Indian Air Force.
- ❖ **Region wise classification of meteorological Sub-Divisions:**
  - **Northwest India:** Western Himalayan Region (Jammu-Kashmir-Ladakh-Gilgit-Baltistan-Muzaffarabad, Himachal Pradesh and Uttarakhand); Punjab, Haryana-Chandigarh-Delhi; West Uttar Pradesh, East Uttar Pradesh, West Rajasthan and East Rajasthan.
  - **Central India:** West Madhya Pradesh, East Madhya Pradesh, Vidarbha and Chhattisgarh.
  - **East India:** Bihar, Jharkhand, Sub-Himalayan West Bengal & Sikkim; Gangetic West Bengal, Odisha and Andaman & Nicobar Islands.
  - **Northeast India:** Arunachal Pradesh, Assam & Meghalaya and Nagaland, Manipur, Mizoram & Tripura.
  - **West India:** Gujarat Region, Saurashtra & Kutch, Konkan & Goa, Madhya Maharashtra and Marathawada.
  - **South India:** Coastal Andhra Pradesh & Yanam, Telangana, Rayalaseema, Coastal Karnataka, North Interior Karnataka, South Interior Karnataka, Kerala & Mahe, Tamil Nadu, Puducherry & Karaikal and Lakshadweep.



## LEGENDS

1. अंडमान और निकोबार द्वीपसमूह

2. अरुणाचल प्रदेश

3. असम और मेघालय

4. नागालैंड, मणिपुर, मिजोरम और त्रिपुरा

5. उप-हिमालयी पश्चिम बंगाल और सिक्किम

6. गंगीय पश्चिम बंगाल

7. ओडिशा

8. झारखंड

9. बिहार

10. पूर्वी उत्तर प्रदेश

11. पश्चिम उत्तर प्रदेश

12. उत्तराखंड

13. हरियाणा, चंडीगढ़ और दिल्ली

14. पंजाब

15. हिमाचल प्रदेश

16. जम्मू और कश्मीर और लद्दाख

17. पश्चिम राजस्थान

18. पूर्वी राजस्थान

19. पश्चिम मध्य प्रदेश

20. पूर्वी मध्य प्रदेश

21. गुजरात

22. सौराष्ट्र

23. कोंकण और गोवा

24. मध्य महाराष्ट्र

25. मराठवाड़ा

26. विदर्भ

27. छत्तीसगढ़

28. तटीय आंध्र प्रदेश और यनम

29. तेलंगाना

30. रायलसीमा

31. तमिलनाडु, पुडुचेरी और कराईकल

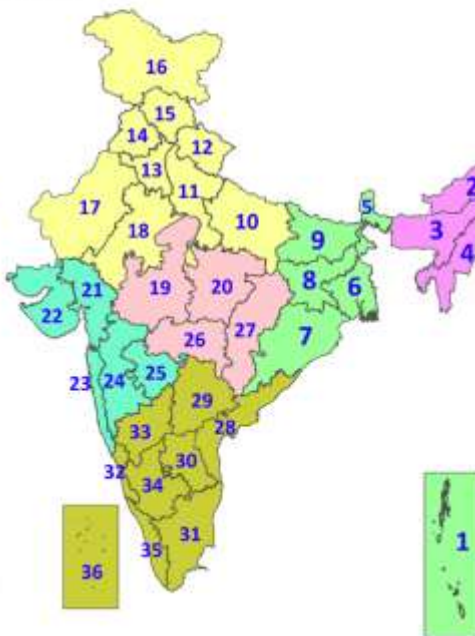
32. तटीय कर्नाटक

33. आंतरिक उत्तरी कर्नाटक

34. आंतरिक दक्षिणी कर्नाटक

35. केरल और माहे

36. लक्षद्वीप



1. Andaman & Nicobar Islands

2. Arunachal Pradesh

3. Assam & Meghalaya

4. Nagaland, Manipur, Mizoram & Tripura

5. Sub-Himalayan West Bengal & Sikkim

6. Gangetic West Bengal

7. Odisha

8. Jharkhand

9. Bihar

10. East Uttar Pradesh

11. West Uttar Pradesh

12. Uttarakhand

13. Haryana, Chandigarh & Delhi

14. Punjab

15. Himachal Pradesh

16. Jammu & Kashmir and Ladakh

17. West Rajasthan

18. East Rajasthan

19. West Madhya Pradesh

20. East Madhya Pradesh

21. Gujarat

22. Saurashtra

23. Konkan & Goa

24. Madhya Maharashtra

25. Marathwada

26. Vidarbha

27. Chhattisgarh

28. Coastal Andhra Pradesh & Yanam

29. Telangana

30. Rayalaseema

31. Tamilnadu, Puducherry & Karaikal

32. Coastal Karnataka

33. North Interior Karnataka

34. South Interior Karnataka

35. Kerala & Mahe

36. Lakshadweep

## SPATIAL DISTRIBUTION (% of Stations reporting)

% Stations	Category	% Stations	Category
76-100	Widespread (WS/Most Places)	26-50	Scattered (SCT/A Few Places)
51-75	Fairly Widespread (FWS/Many Places)	1-25	Isolated (ISOL)



Fog



Heavy Snow



Cold Wave



Heavy Rain



Dust Storm



Cold Day



Very Heavy Rain



Heat Wave



Ground Frost



Extremely Heavy Rain



Warm Night



Thunder & Lightning



Hot Day



Hailstorm



Hot & Humid



Dust Raising Winds



Strong Surface Winds

### COLOUR CODED WARNING

No Warning (No Action)

Watch (Be Aware)

Alert (Be Prepared To Take Action)

Warning (Take Action)

### Probabilistic Forecast

Terms	Probability of Occurrence (%)
Unlikely	< 25
Likely	25 - 50
Very Likely	50 - 75
Most Likely	> 75

\* Red colour warning does not mean "Red Alert", Red colour warning means "Take Action".

Forecast and Warning for any day is valid from 0830 hours IST of day till 0830 hours IST of next day.

For more details, kindly visit <https://mausam.imd.gov.in> or contact: 011-2434-4599

(Service to the Nation since 1875)



### DEFINITION/CRITERIA

#### Rain/ Snow \*

Heavy: 64.5 to 115.5 mm/cm \*  
Very Heavy: 115.6 to 204.4 mm/cm \*  
Extremely Heavy: > 204.4 mm/cm \*

#### Heat Wave

When maximum temperature of a station reaches  $\geq 40^{\circ}\text{C}$  for plains and  $\geq 30^{\circ}\text{C}$  for hilly regions  
(a) Based on Departure from normal

Heat Wave: Maximum Temperature Departure from normal  $4.5^{\circ}\text{C}$  to  $6.4^{\circ}\text{C}$ .

Severe Heat Wave: Maximum Temperature Departure from normal  $\geq 6.5^{\circ}\text{C}$

(b). Based on Actual maximum temperature

Heat Wave: When actual maximum temperature  $\geq 45^{\circ}\text{C}$ .

Severe Heat Wave: When actual maximum temperature  $\geq 47^{\circ}\text{C}$ .

(c). Criteria for heat wave for coastal stations

When maximum temperature departure is  $> 4.5^{\circ}\text{C}$  from normal. Heat Wave may be described provided maximum temperature  $\geq 37^{\circ}\text{C}$ .

#### Warm Night

When maximum temperature remains  $40^{\circ}\text{C}$

Warm Night: When minimum temperature departure  $4.5^{\circ}\text{C}$  to  $6.4^{\circ}\text{C}$ .

Severe Warm Night: When minimum temperature departure  $> 6.4^{\circ}\text{C}$ .

#### Cold Wave

When minimum temperature of a station  $\leq 10^{\circ}\text{C}$  for plains and  $\leq 0^{\circ}\text{C}$  for hilly regions.

(a). Based on departure

Cold Wave: Minimum Temperature Departure from normal  $-4.5^{\circ}\text{C}$  to  $-6.4^{\circ}\text{C}$ .

Severe Cold Wave: Minimum Temperature Departure from normal  $\leq -6.5^{\circ}\text{C}$

(b) Based on actual Minimum Temperature (for Plains only)

Cold Wave: When Minimum Temperature is  $\leq 4.0^{\circ}\text{C}$

Severe Cold Wave: When Minimum Temperature is  $\leq 2.0^{\circ}\text{C}$

(c) For Coastal Stations

When Minimum Temperature departure is  $\leq -4.5^{\circ}\text{C}$  & actual Minimum Temperature is  $\leq 15^{\circ}\text{C}$

#### Cold Day

When minimum temperature of a station  $\leq 10^{\circ}\text{C}$  for plains and  $\leq 0^{\circ}\text{C}$  for hilly regions  
Based on departure

Cold Day: Maximum Temperature Departure from normal  $-4.5^{\circ}\text{C}$  to  $-6.4^{\circ}\text{C}$ .

Severe Cold Day: Maximum Temperature Departure from normal  $\leq -6.5^{\circ}\text{C}$

#### Fog

Phenomenon of small droplets suspended in air and the horizontal visibility  $< 1\text{km}$

Moderate Fog: When the visibility between 500-200 metres

Dense Fog: when the visibility between 50- 200 metres

Very Dense Fog: when the visibility  $< 50$  metres

#### Thunderstorm

Sudden electrical discharges manifested by a flash of light (Lightning) and a sharp rumbling sound (thunder)

#### Dust/Sand Storm

An ensemble of particles of dust or sand energetically lifted to great heights by a strong and turbulent wind.

#### Frost

Ice deposits on ground

Air temperature  $\leq 4^{\circ}\text{C}$  ( over Plains)

#### Squall

A strong wind that rises suddenly, lasts for atleast 1 minute.

Moderate: Wind speed 52-61 kmph

Severe: Wind speed 62-67 kmph

Very Severe: Wind speed  $> 67$  kmph

#### Sea State

Effect of various waves in the sea over specific area

Rough to very rough: Wind speed 41-62 kmph (22-33 knots) & Wave height 2.5-6 metre

High to very high: Wind speed 63-117 kmph ( 34-63 knots) & Wave height 6-14 metre

Phenomenal: Wind speed  $> 117$  kmph ( $> 63$  knots) & Wave height  $> 14$  metre

#### Cyclone

Cyclonic Storm: Wind speed 62-87 kmph (34-47 knots)

Severe Cyclonic Storm: Wind speed 88-117 kmph (48-63 knots)

Very Severe Cyclonic Storm: Wind speed 118-165 kmph (64 - 89 knots)

Extremely Severe Cyclonic Storm: Wind speed 166-220 kmph (90 -119 knots)

Super Cyclone Storm: Wind speed  $> 220$  kmph ( $> 119$  knots)

\* Red colour warning does not mean "Red Alert", Red colour warning means "Take Action".

Forecast and Warning for any day is valid from 0830 hours IST of day till 0830 hours IST of next day.

For more details, kindly visit <https://mausam.imd.gov.in> or contact: 011-2434-4599

(Service to the Nation since 1875)

**Hot and Humid:** When maximum temperatures remain  $3^{\circ}\text{C}$  above normal along with the above normal relative humidity.